

**HITACHI**  
Inspire the Next



**Noblus**  
Advanced Versatile Ultrasound System  
For Urology

 Hitachi Aloka Medical America, Inc.



Ultrasound Solutions Clearly Defined™



# Noblus

Advanced Versatile Ultrasound System  
For Urology

 Hitachi ALOKA Medical America, Inc.



Ultrasound Solutions Clearly Defined™



## Noblus Overview

The conveniently compact Noblus ultrasound system is equipped with UltraBE, a broadbeam engine that is typically found in high end ultrasound systems. This advanced ultrasound specific digital signal and beamform processing provides the urologist with superior affordable imaging including:

- High Definition Screen Display provides clean crisp image quality.
  - Quick response, user friendly interface includes easy touchscreen capabilities, tab menus and an intuitive keyboard to increase workflow
- Customizable to meet specific needs
- Compact, portable, ergonomically designed cart is easy to transport whether it be from room to room or office to office
- Wide array of transducer options and needle guides that meet the needs of multiple applications
- Ability to interface with other technologies:
  - Eigen – Artemis and Profuse
  - Treatment planning
- Storage and ability to review past exam allows user to view for side by side comparison with current exams
- Onboard Manual for easy access and storage
- Wireless LAN Ability enables wireless network connection and ability to do wireless Dicom transmission

### Ultrasound Broadband Engine (Ultra BE)

The most advanced broadband beam-forming technology combined with high speed image processing that allows for higher definition ultrasound imaging than ever before.



### HI Definition Tissue Harmonic Imaging (HdTHi)

Provides high quality imaging using an expanded range of harmonic signals. This technology results in excellent image resolution and sensitivity and improved penetration.



### HI REZ

Clearly displays differences in tissues, reducing speckle noise while maintaining the frame rate. It can also display outlines more clearly by selectively emphasizing boundaries.



### Spatial Compound Imaging (SCI)

The ultrasound beam is transmitted and received in real time and in the multiple directions resulting in a reduction of speckle noise, suppression of artifacts, and improvement of contrast resolution allowing lesions to be clearly observed.



### HI Support

At the touch of a button the B-mode image is instantly optimized to the user's preference. This technology continually monitors the user's typical settings to optimally adjust the image when pressed resulting in less manual adjustments and more efficient examinations.



### Single Crystal Probes

A single crystal is used to provide the piezoelectric elements of the probe. Single crystal technology achieves higher sensitivity and wider bandwidths over standard piezoceramics.



Tap icon for more info

[Schedule a Demo](#)

[Contact Sales](#)

## Noblus Features

### Real Time Elastography

An innovative diagnostic tool that provides real-time color display of tissue elasticity.



### Fine Flow

Displays blood flow with directional information at higher frame rates and spatial resolution compared to conventional methods. Detail and accuracy of blood flow information is greatly increased with reduced blooming of color.



### Dual CFM

Real-time side-by-side display of a B-mode image and Color Doppler image assisting in easy anatomical interpretation of blood flow.



### Trapezoid

Trapezoidal display on linear transducers provides a wider diagnostic field of view.



### Patient Dependent Compensation (PDC)

Allows user to make adjustments to the assumed speed of sound in soft tissue creating high quality images for every patient, every time.



### Contrast Harmonic Imaging\*

To improve understanding of blood flow information, Hitachi-Aloka offers harmonics enhanced imaging specifically designed for use with contrast agents. The low MI contrast imaging obtained improves signal-to-noise ratio.



\* In the USA, contrast-enhanced ultrasound has not been market cleared by the FDA for all imaging applications.

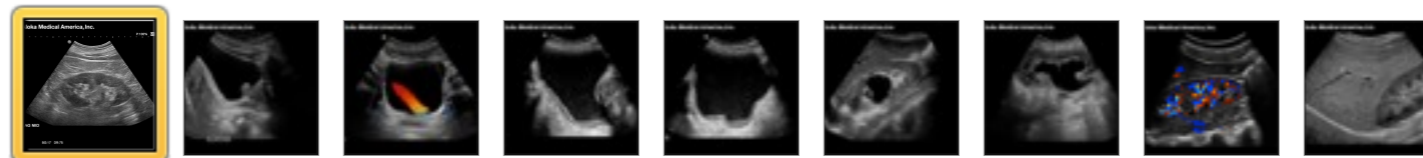


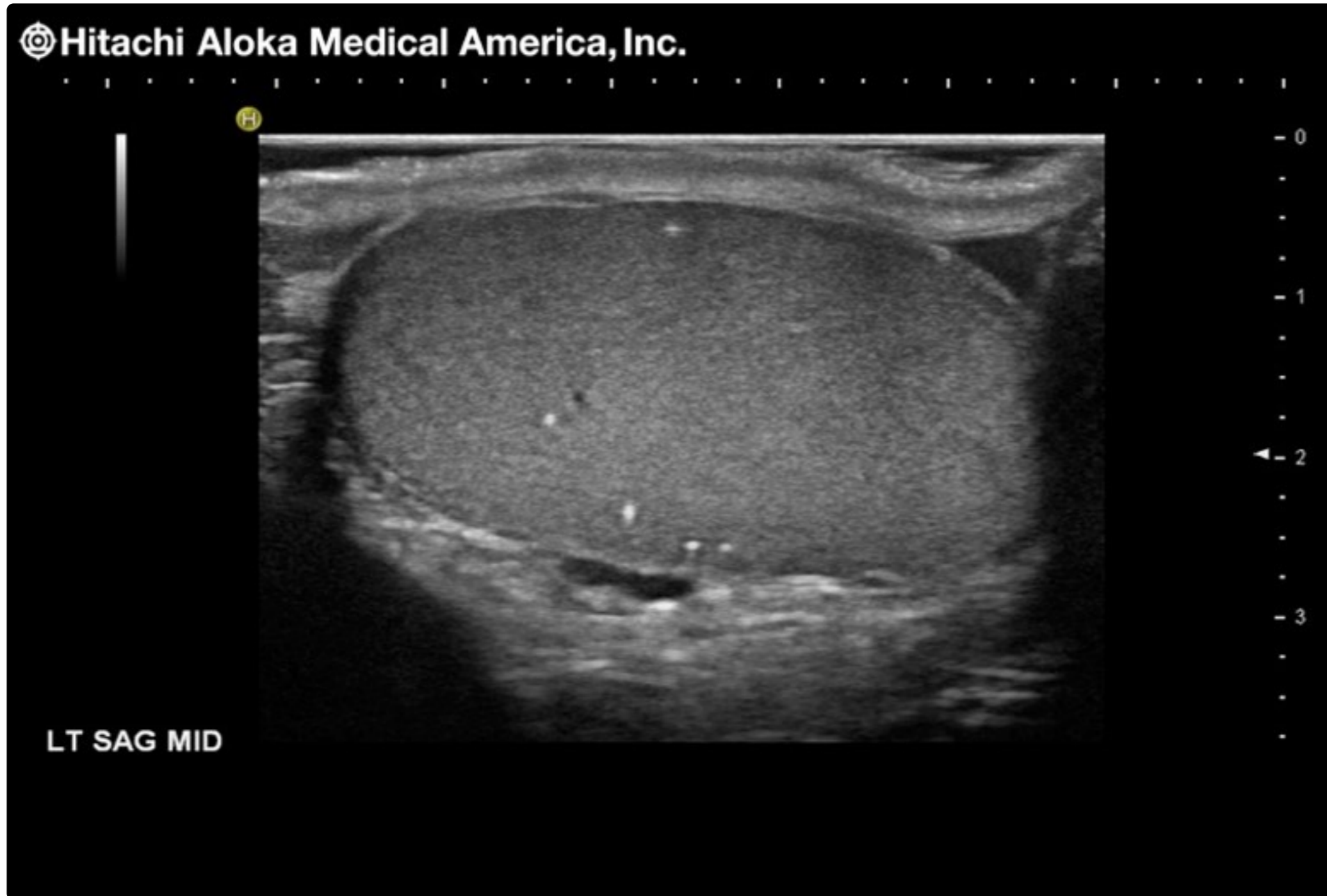
[→ Schedule a Demo](#)

[→ Contact Sales](#)

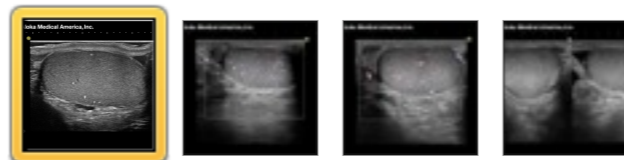


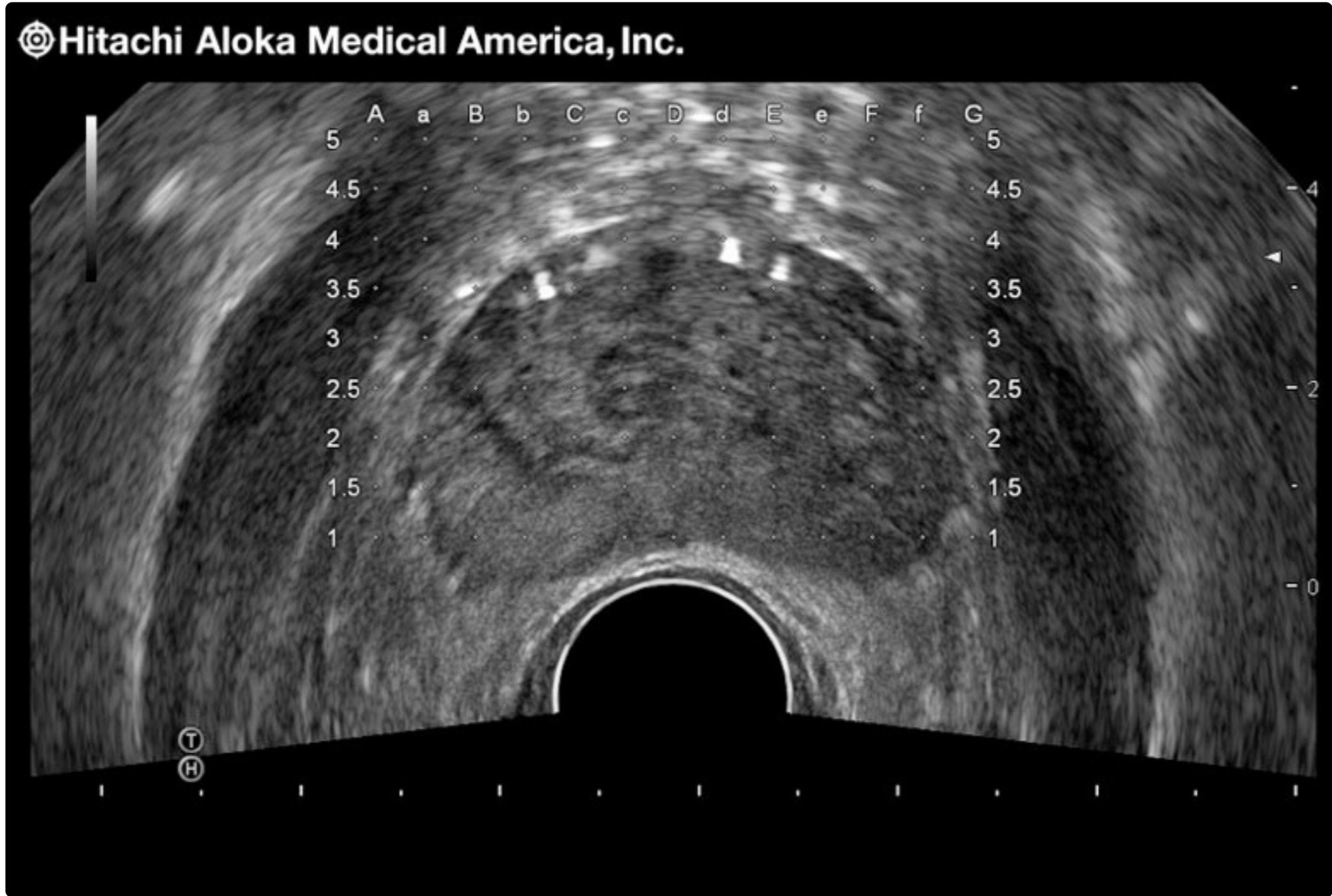
Noblus - Abdominal Imaging - Kidney



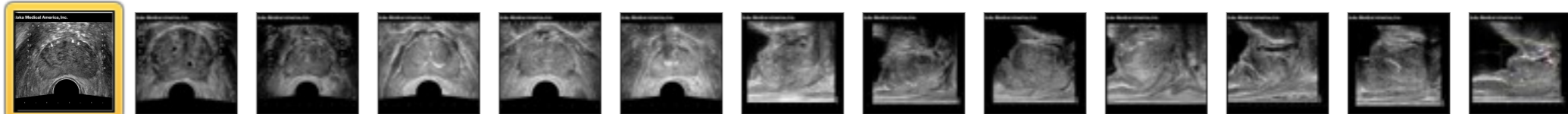


Noblus - Scrotal & Penile Imaging - Testicular





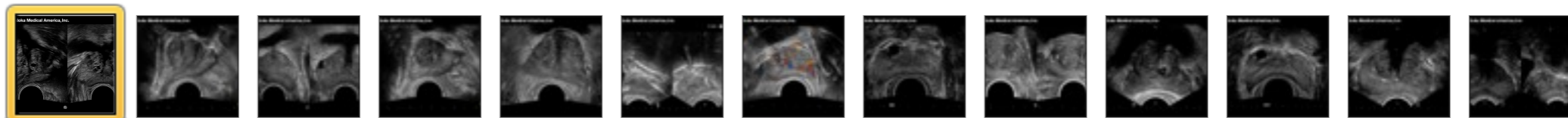
Noblus - Transperineal Prostate Imaging - Prostate Brachy with Seeds







Noblus - Transrectal Prostate Imaging - Prostate Dual Screen



**C22P**



**C41V**

**C25**



**C41L47RP**



1

2

3

4



[Schedule a Demo](#)

[Contact Sales](#)

**CC531S**

**L55**

**EUP-B715**

**L64**



1

2

3

4



### Contact Information

#### Telephone

1-203-269-5088  
1-800-872-5652

#### Fax

1-203-269-6075

**Sales:** 1-800-872-5652  
[sales@hitachi-aloka.com](mailto:sales@hitachi-aloka.com)

**Service:** 1-888-782-5652  
[service@hitachi-aloka.com](mailto:service@hitachi-aloka.com)

**24-hour Service Hotline**  
1-888-782-5652

 [Schedule a Demo](#)



### Hitachi Aloka Medical America, Inc.

10 Fairfield Boulevard  
Wallingford, CT 06492

#### [Directions](#)

MP1114-90